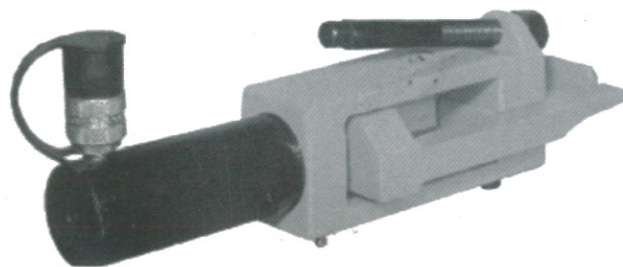
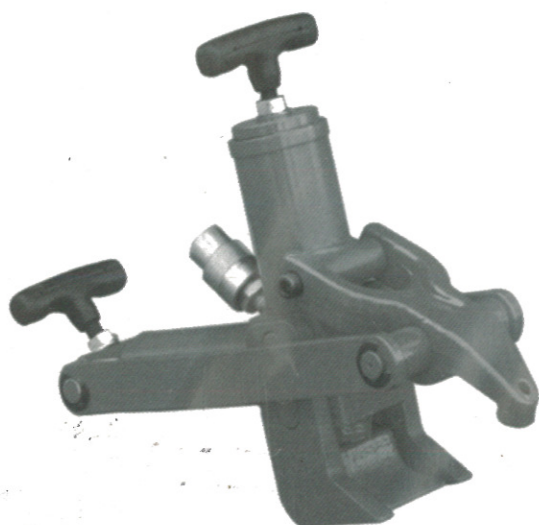




OWNER'S MANUAL

BEAD BREAKER



NO. Y471120 / Y471130

WARNING

Read the instructions and safety warnings before operating bead breaker. Failure to heed the instructions and safety warnings may result in personal injury or property damages.



Gaither Tool Company

2255 W. Morton Ave., Jacksonville, IL 62650

AL CONTAINS
CONCERNING
THIS DEVICE.
READ AND
SEE DETAILS
THE DEVICE.
BE RETAINED
CE.

ONSIBILITY

before starting

tion means
(etc.)

ulated vehicles.
sealed by the

o tamper with it

of these
use damages
BREAKERS with
and property



WARNING

The owner and/or the operator shall study the product instructions and retain them for future reference.

The owner and/or the operator shall have an understanding of the product operating instructions and warnings before operating bead breaker.

Warning information shall be emphasized and understood. If the operator is not fluent in English, the product instructions and warnings shall be read to and discussed with the operator in the operator's native language by the purchaser/ owner or his designee, making sure that the operator comprehends its contents.



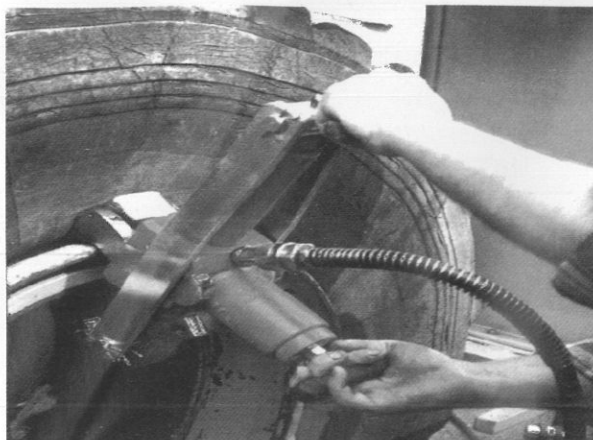
WARNING

The optional air/hydraulic pump that is capable of generating fluid pressure up to 10,000 PSI should be used. Keep both hands on the handles and away from the clamping jaw or breaker tongue. Make certain that the tool is properly aligned on the rim before allowing the bead breaking action.

Do not continue to operate the air/hydraulic pump once the breaker rod is completely extended. Failure to comply with these instructions could result in personal injury or equipment damage.

Never add air to a tire that has been run flat or under inflated. Follow tire manufacturers recommendations for run flat tires.

Save these instructions. For your safety and the safety of others around you, read carefully before attempting to assemble, service or use the bead breaker. Observe all safety and warning information. Always wear safety glasses when operating this product. Failure to comply with the information provided with this manual may result in severe, even fatal injury and/ or property damages.



OPERATION

1. Make certain the tire is completely deflated. Using rubber lubricant, lubricate the area where you plan to break the bead.

2. Connect the hydraulic pump (manual or air) to the bead breaker through the quick-couplers. If you use the air/hydraulic pump, you must connect it to a source of compressed air of 100-120 PSI (see separate manual of the air/hydraulic pump). Test the bead breaker before you attach it to the rim. Release all air from tire, remove cap and valve and the valve extension included.

Note: The air line should be equipped with an air line filter.

3. Position the bead breaker so that the jaw makes solid contact with the rim and the teeth are positioned in the crevice between the bead of the tire and the rim.

Note: When a tire has a trash guard, you may have to drive two straight tire irons between the rim and the tire bead to get a starting point for the teeth.

4. Step on the PUMP end of the pump pedal. The clamping rod will begin to extend and the jaw will grip the rim.

Note: Make certain that the teeth slip in between the rim flange and the bead. If not, depress the RELEASE end of the pump pedal and realign the tool. If the tool is not positioned correctly, extending the breaker rod may damage the tire bead or sidewall, the rim flange, or the tool. If the tool is not pushing parallel to the bead seat area, reposition before continuing.

5. Continue pumping until the tongue of the bead breaker pushes the bead free of the rim.

6. Repeat the process as needed around the diameter of the rim. The tool can be used on the front and back bead areas.

7. Once the bead is free of the rim, depress the RELEASE end of the pump pedal.

MAINTENANCE

Cleaning

Wash the exterior of the bead breaker with warm, soapy water. Rinse with clean water and blow the tool dry with an air nozzle. Also pay particular attention to the cleanliness of the pump.

Note: Avoid seal damage. Do not use solvent to clean the bead breaker.

Storage

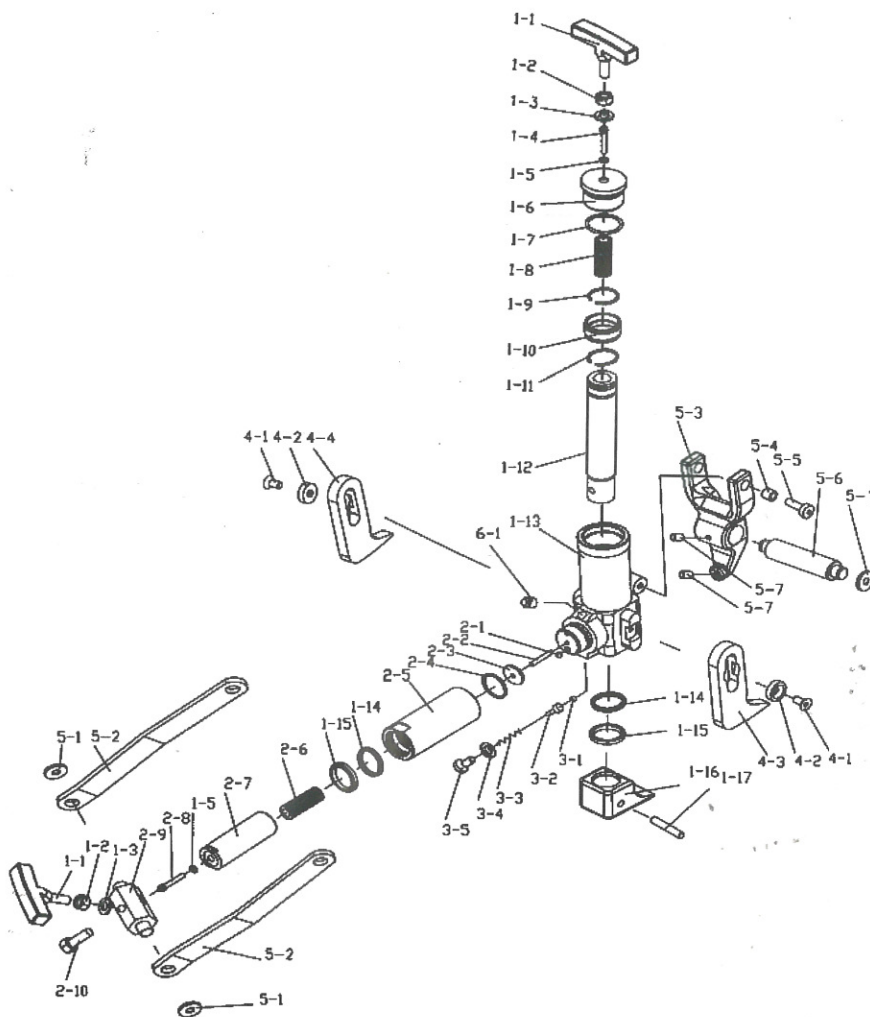
Prior to store the bead breaker:

1. Completely retract both rods. An exposed rod may be subject to rusting, pitting and damage from striking other tools.
2. If chloride is spilled on the tool, rinse with clean water and blow dry.

TROUBLE SHOOTING

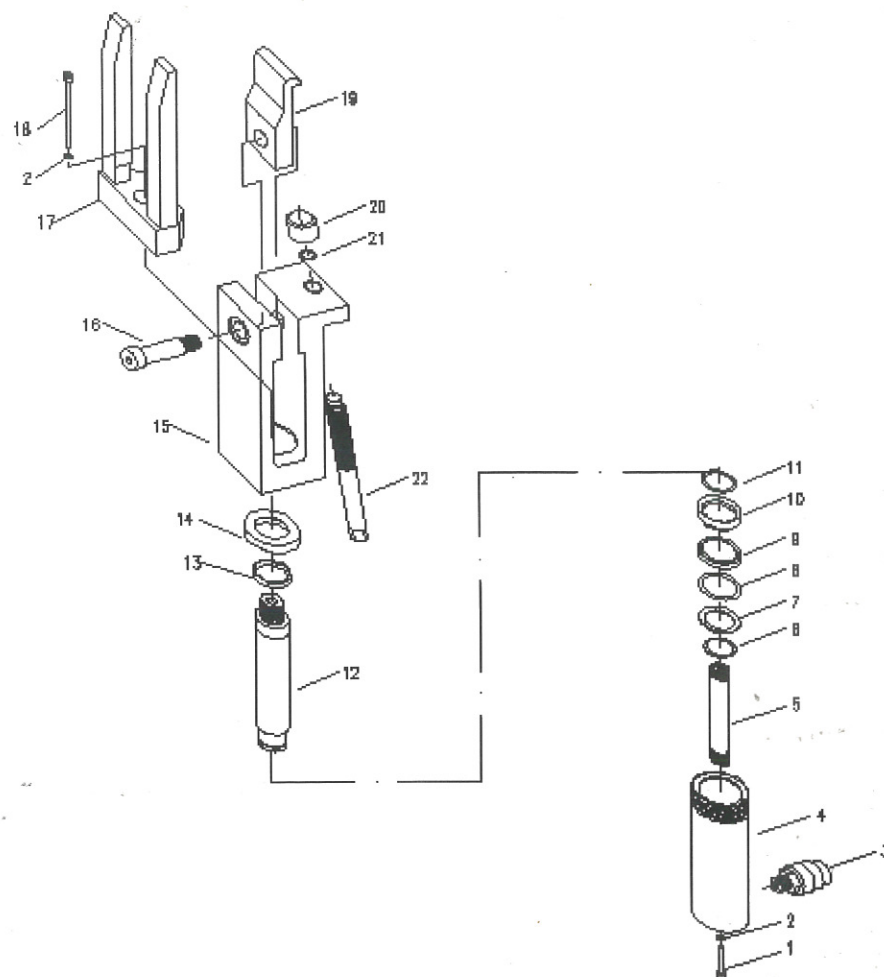
Symptom	Causes	Remedy
Rods extend too slowly.	Insufficient hydraulic pressure from pump.	Check air supply.
		Check clearance of inlet check ball. Ball must be flush with or below end of filter adapter.
Rods fail to retract.	Hydraulic pump does not release.	Dirt under pedal in release valve area. Clean pedal.
	Bearing is misaligned on breaker rod.	Correct or replace.
	Broken or weak springs.	Replace.
Both rods extend at the same time. Hydraulic pressure in breaker cylinder is not being released.	Sequence ball not seated, or spring is broken or weak.	Correct or replace.
	Loose screw and ball not seated.	Correct or replace.
Breaker rod retracts after clamping rod. Hydraulic pressure in breaker cylinder is not being released.	Fluid return ball did not restart.	Correct or replace.
	Dirt plugging return port.	Clean port.
	Weak or broken spring in breaker cylinder.	Replace.
Pump does not reciprocate.	Air piston stuck.	Check cylinder bore of pump for contamination or lack of lubrication.
	Piston poppet not sealing.	Replace.
Pump reciprocates. Ram will not extend.	Check prime.	Depress both air valve and hydraulic release valve at the same time.
Pump extends ram but will not hold system pressure.	Outlet check ball not sealing properly.	Correct or replace.
	Release valve mechanism not sealing properly.	Check pin, ball, release poppet, and poppet retainer. Correct or replace.
Pump extends ram but will not build to maximum pressure. No visible sign of leakage.	Check air supply.	Verify that the compressed air pressure at 100 ~ 125 PSI
	Check for internal leakage.	Release valve mechanism.
		Low relief valve setting.
		Inlet check ball not seating properly. Correct or replace.
Pump extends ram but will not build maximum pressure. Visible sign of leakage through exhaust muffler.	Check piston sub-assembly.	Replace copper gasket and assemble in vertical position.
		Replace piston packing.

Spare parts list



Pos.	Art. No.	Description	Pos.	Art. No.	Description
1-1	Y471120-1-1	Handle	2-7	Y471120-2-7	Piston rod
1-2	Y471120-1-2	M12 nut	2-8	Y471120-2-8	M5×70 screw
1-3	Y471120-1-3	?12 Washer	2-9	Y471120-2-9	Joint block
1-4	Y471120-1-4	M5 ×50 screw	2-10	Y471120-2-10	M12 ×45 bolt
1-5	Y471120-1-5	?5 Copper washer	3-1	Y471120-3-1	?8 steel ball
1-6	Y471120-1-6	Cylinder cap	3-2	Y471120-3-2	Ball seat
*1-7	Y471120-1-7	O-ring	3-3	Y471120-3-3	Spring
1-8	Y471120-1-8	Spring A	3-4	Y471120-3-4	?12 copper washer
1-9	Y471120-1-9	Snap ring	3-5	Y471120-3-5	M12×20 screw
1-10	Y471120-1-10	bushing	4-1	Y471120-4-1	M10×15 Screw
1-11	Y471120-1-11	Snap ring	4-2	Y471120-4-2	Bushing
1-12	Y471120-1-12	Piston rod	4-3	Y471120-4-3	Left foot
1-13	Y471120-1-13	Cylinder body	4-4	Y471120-4-4	Right foot
*1-14	Y471120-1-14	Y-seal	5-1	Y471120-5-1	Snap ring
*1-15	Y471120-1-15	Bushing	5-2	Y471120-5-2	Connection rod
1-16	Y471120-1-16	Extrusion leg	5-3	Y471120-5-3	Claw
1-17	Y471120-1-17	Pin	5-4	Y471120-5-4	Bushing
2-1	Y471120-2-1	?6 steel ball	5-5	Y471120-5-5	M10×25 Screw
2-2	Y471120-2-2	M6× 30 screw	5-6	Y4711205-6	Shaft
*2-3	Y471120-2-3	Washer	5-7	Y471120-5-7	Screw
*2-4	Y471120-2-4	O-ring	6-1	Y471120-6-1	Plug
2-5	Y471120-2-5	Cylinder	*	Y471120-PURK	Repair kit
2-6	Y471120-2-6	Spring			

Spare parts List



Pos.	Art. No.	Description	Pos.	Art. No.	Description
*1	Y471130-1	Screw M6 × 35	13	Y471130-13	Pilot ring
2	Y471130-2	Washer	14	Y471130-14	Bound ring
3	Y471130-3	Tie-In assy. 3/8" -18	15	Y471130-15	Toe housing
4	Y471130-4	Cylinder	16	Y471130-16	Table Pin
5	Y471130-5	Returning spring assy.	17	Y471130-17	Toe body
*6	Y471130-6	Snap ring	18	Y471130-18	Screw M6 × 90
*7	Y471130-7	Washer	19	Y471130-19	Toe
*8	Y471130-8	O-ring	20	Y471130-20	Top cap
*9	Y471130-9	Sealing washer	21	Y471130-21	Snap ring
*10	Y471130-10	Piston ring	22	Y471130-22	Screw
11	Y471130-11	O-ring	*	Y471130-PURK	Repair Kits
12	Y471130-12	Ram piston			